

Datasheet

The LED matrix display series WMA3264P6 is ideally suited for visualizations of situational data in indoor as well as outdoor areas. The utilized LED matrix modules stand out through their extremely bright SMD LEDs which provide clear readability even in poor lighting conditions, e. g. directly incoming sun rays. The wide viewing angle of SMD LEDs ensures excellent readability over a very large field of view.



Mechanical Data

| | |
|----------------|---|
| Display | LED display / RGB; 16 colors preset |
| Matrix Area | 32 x 64 LEDs |
| Digit Height | <16.5 cm |
| Digit Width | >4.2 cm |
| Font | different fonts and font sizes selectable |
| Dimensions | 258 x 410 x 70 mm |
| Display Area | 192 x 384 mm |
| Material | |
| Housing | aluminum; silver anodized |
| Windows | Plexiglas; non-reflecting; grey |
| Weight | 3.5 kg |
| Connectors | Phoenix Quickon/ quick connection |
| 230 VAC; 50 Hz | 3 pins; braid 0.75 – 1.5 mm ² |
| 18 – 36 VDC | 4 pins; braid 0.75 – 1.5 mm ² |
| IP-Rating | IP54 (indoor applications) IP65 (outdoor applications) |

Electrical Data

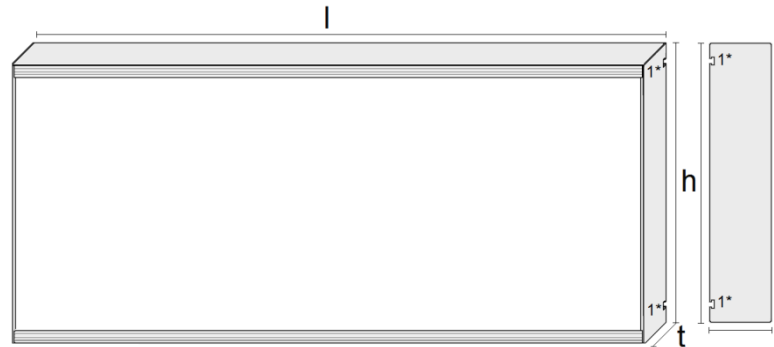
| | |
|-------------------------|---|
| Power Supply | 230 VAC; 50 Hz 18 – 36 VDC |
| Consumption | <18 W / 32 W (indoor applications) <22 W / 42 W (outdoor applications) |
| Interface ¹⁾ | RS232; RS485; Can-Bus; Ethernet TCP/IP; EtherNet/IP; PROFIBUS DP; PROFINET; WLAN; Bluetooth; USB |

¹⁾Further interfaces available on request, e. g. A/D converter; time; timer; BCD; SPS-compatible; temperature; counter; rotational speed; rotary encoder

Datasheet



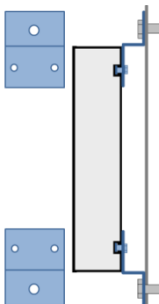
Dimensions

height (h): 158 mm
 length (l): 410 mm
 depth (t): 70 mm
 1* mounting slot 10.5 x 4.5 mm



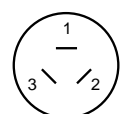
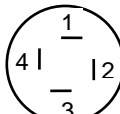
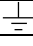
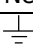
Mounting

Mounting of the display is easily done through respective mounting slots.

| mounting kit BS L200 | lifting lug AOE L200 | wall mounting kit WM L200 |
|--|---|---|
|  |  |  |
| mounting on existing back / ceiling or floor plate consists out of: 4x M6 nuts/ bolts 2x square nuts plug position ¹⁾ : bottom right | ceiling mounting, suspensions consists out of: 2 lifting lugs plug position ¹⁾ : top right | wall mounting/ mounting backside consists out of: 2x wall mounting brackets 4x M6 nuts/ bolts plug position ¹⁾ : bottom right |

¹⁾If present conditions require different plug positions, it is possible to have them adjusted individually. Possible plug positions: right, left, top, down, back

Pin Assignment

| | 230 VAC; 3-pin | 18-36 VDC; 4-pin |
|----------|---|--|
| |  |  |
| PIN | | |
| 1 | L | +24 VDC |
| 2 | N | GND |
| 3 |  | Nc |
| 4 | |  |

Datasheet

Ordering Example

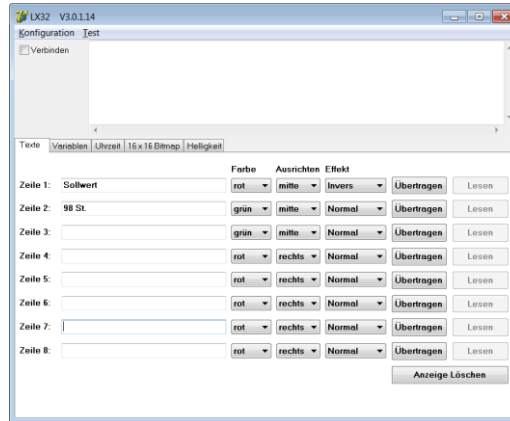
| | | | | | |
|--|-----------------------------|---|-----------|---|----------|
| Type | WMA3264P6 | - | GI | . | C |
| 32 | = height (number of pixels) | | | | |
| 64 | = width (number of pixels) | | | | |
| Power Supply | | | | | |
| G | = 24 VDC | | | | |
| H | = 230 VAC | | | | |
| IP-Rating | | | | | |
| I | = IP54 | | | | |
| O | = IP65 | | | | |
| Interface/ Control¹⁾ | | | | | |
| Z | = RS232 | | | | |
| V | = RS485 | | | | |
| C | = CAN-Bus | | | | |
| P | = PROFIBUS DP | | | | |
| E | = Ethernet TCP/IP | | | | |
| PN | = PROFINET | | | | |
| EI | = Ethernet/IP | | | | |
| W | = WLAN | | | | |
| B | = Bluetooth | | | | |
| U | = USB | | | | |

¹⁾Further interfaces available on request, e. g. A/D converter; time; timer; BCD; SPS-compatible; temperature; counter; rotational speed; rotary encoder

Scope of Delivery

- **LED matrix display**
- **mounting kit BS L200**
- **counter plug – industry ready plug IP54 or IP65**
- **datasheet**
- **LX-protocol-description** – data connection to external systems
In order to connect to external systems, all relevant display and general functions are summed up in a simple data transfer protocol. This protocol ensures control of the display and transfer of text information from various systems and processes. A wide range of fonts and font sizes specifically designed for LED displays is available.
All display depictions can be designed individually via command codes. Using additional PC software is therefore not necessary.
- **PC-operating software LX**

PC-operating software LX – for industrial applications



A simple operating software is available for various applications in the industrial sector. The PC operating software allows the input of information and overlay of various residual effects (for example tickers, blinking, ...)

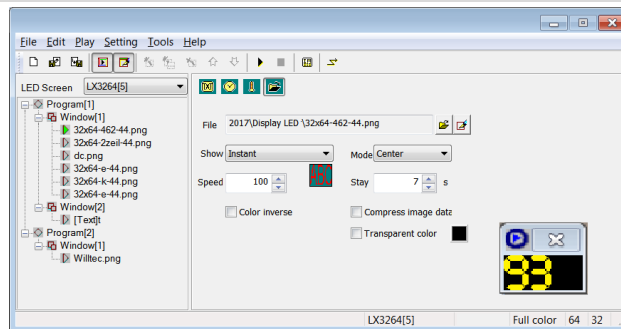
overview of functionalities

- configuration of the display
- storing/ transferring to the LED matrix display
- implementation of real-time information, for example time, date of external measured values
- adjustment and configuration of fade-in effects

available interfaces:

RS232; RS2485; Ethernet; CANBUS; PROFIBUS; PROFINET; and many more

PC-operating software LX – for advertising purposes



A second PC operating software is available for the design of successful advertisements. The operating software **LEDCENTER** allows the input of information, the preparation of sequences and the fade-in of more than 30 text effects.

overview of functionalities:

- configuration of the display
- preparation of sequences
- utilization of Microsoft fonts
- fade-in of bitmaps
- storing of information and transferring to the LED matrix display
- adjustment and configuration of fade-in effects

available interfaces:

RS232; RS2485; Ethernet; WLAN; USB; and many more